

## Task 53

# Next Generation Solar Cooling & Heating Systems

You could say that cooling, is a hot issue. The stats in the new IEA report, *The Future of Cooling* ([www.iea.org/futureofcooling/](http://www.iea.org/futureofcooling/)), speak for themselves...

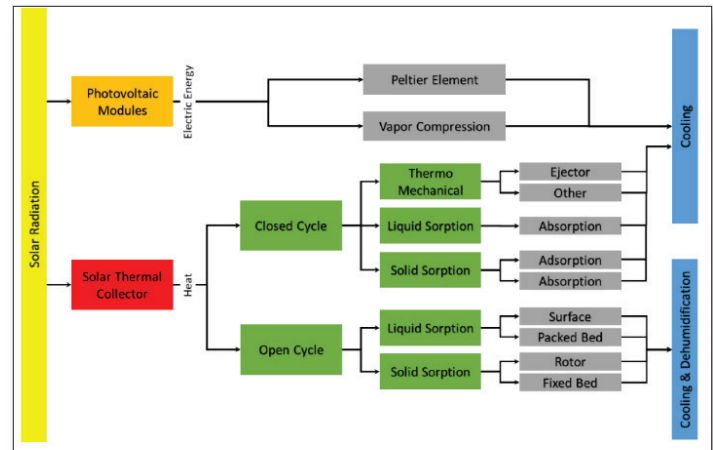
- “Global energy demand from air conditioners is expected to triple by 2050, requiring new electricity capacity the equivalent to the combined electricity capacity of the United States, the EU, and Japan today.”
- “The global stock of air conditioners in buildings will grow to 5.6 billion by 2050, up from 1.6 billion today – which amounts to 10 new ACs sold every second for the next 30 years.”
- “Using air conditioners and electric fans to stay cool already accounts for about a fifth of the total electricity used in buildings around the world – or 10% of all global electricity consumption today.”
- “AC use is expected to be the second-largest source of global electricity demand growth after the industry sector and the strongest driver for buildings by 2050.”

For the IEA SHC, we’ve long seen this ever-growing demand for cooling as an opportunity for solar technology and an area for international collaboration. Our most recent solar cooling Task is winding down. For the past four years, an international team of researchers worked on 1) solutions to make solar driven heating and cooling systems cost competitive and 2) building a sustainable and robust market for new innovative solar thermal and PV cooling systems. (Task’s results continue to be posted on the Task webpage [task53.iea-shc.org/](http://task53.iea-shc.org/)). Both of these goals require methods for assessing and evaluating the technical and economic potential of the technology and benchmarking against conventional systems and different renewable technologies. Two tools developed to do just this are T53E4 and ELISA.

### T53E4 Tool – To Assess a System’s Technical and Economic Potential

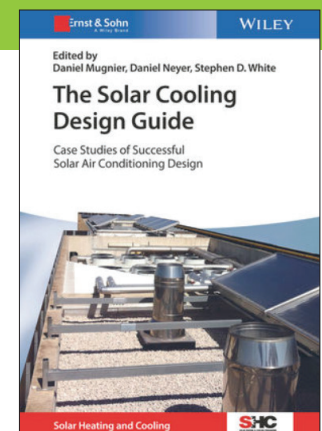
T53E4, a technical and economic assessment tool, rates and benchmarks new developments at the system level (proper design and operation). This assessment tool provides a comprehensive database of boundary conditions that are used in various configurations and applications, which means that tool users can assess entirely different types of configurations. Users can obtain information on the efficiency and cost of a solar heating and cooling (SHC) installation and the reference system in a common comparable format. As part of this work, the Task researchers assessed and benchmarked 28 solar heating and cooling systems with the cooling capacity ranging from 5 kW to more than 150 kW.

The tool’s reference system consists of a natural gas boiler and an air-cooled vapor compression chiller. All key results are provided in a normalized form. This means that a specific reference was selected to avoid a discussion about the absolute values and the right choice of boundary conditions.

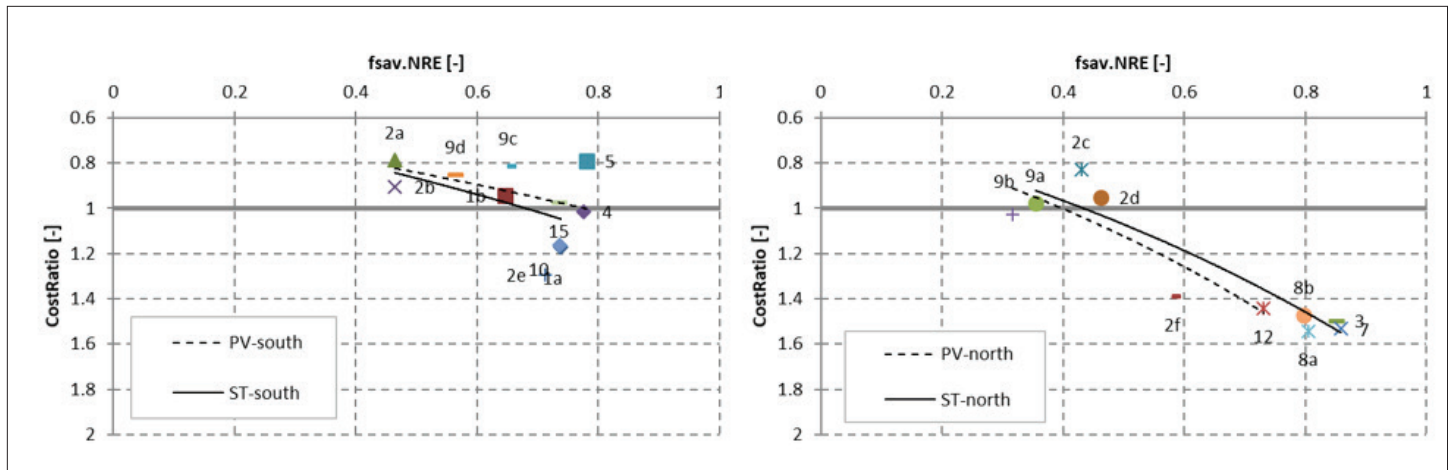


▲ The latest generation of solar air conditioning systems comes in numerous configurations and powered by either solar heat or electricity. Some systems include storage tanks and can provide hot water or space heating in addition to space cooling. Source: Henning et al. (2013) Solar Cooling Handbook

**The Solar Cooling Design Guide is a compendium of case studies of successful solar air conditioning designs with over 100 illustrations in its 132 pages. To purchase your copy click here.**



continued on page 3



▲ Results of analyses using the T53E4 tool: The cost ratio is shown on the y-axis over the non-renewable primary energy savings  $f_{sav,PER-NRE}$  on the x-axis. The graph on the left shows the configurations at southern sites, where cooling demand dominates over the summer. The graph on the right shows results from northern locations, where the need for cooling is lower during the same period.

Two main parameters were calculated from the monthly energy balance of each configuration:

- The non-renewable primary energy savings ( $f_{sav,PER-NRE}$ ), which compares the non-renewable primary energy demand of an SHC system to those by a reference system. The  $f_{sav}$  ranges from 0.3 to 0.94, which means that solar energy replaces 30% to 94% of non-renewable primary energy demand of the reference system.
- The cost ratio (CR) to describe the levelized cost of energy (LCOE) of an SHC system as opposed to the LCOE of a reference installation. The LCOE is derived from annuities paid over the lifetime of a system (typically 25 years). A CR below 1, such as 0.8, indicates that the solar device offers a 20% reduction in costs compared to the baseline, while a CR above 1, such as 1.4, describes a system that raises costs by 40%.

The configurations were then grouped by boundary conditions, for example, whether the location is in the south or north, and identified separate lines for solar heat and PV. Northern installations consist of those in Austria, Finland, Germany, Sweden, and Switzerland. Sites in the south are found in Italy, Spain, France, and China.

The southern locations depicted on the left graph below show promising results, with between 40% and 70% of energy savings at a total cost lower than that of the reference systems. This amount of saving is possible for both PV (see dotted line) and solar heat (see continuous line). If the industry could offer reduced system costs by only 15%, energy savings could be as high as 80% and the units would be cost competitive in southern locations.

The cooling systems in northern locations, where there is less demand for air conditioning (graph on the right-hand side above), paint an entirely different picture. Only if primary energy savings are kept to 40% systems can be cost-competitive to references. Aiming for savings of between 60% and 80% will increase costs tremendously. Again, it is the investment that had the strongest impact of all parameters. If investment costs are reduced by at least 30%, cost-effectiveness could be guaranteed along the entire trendline.

What this tool shows is that cost-competitive solar cooling configurations are possible even with today's investment cost models. And, that solar technologies can be optimized for solar heating and cooling. Whether solar thermal or PV is the more favorable option will mostly depend on the location and the design of the system.

### ELISA Tool

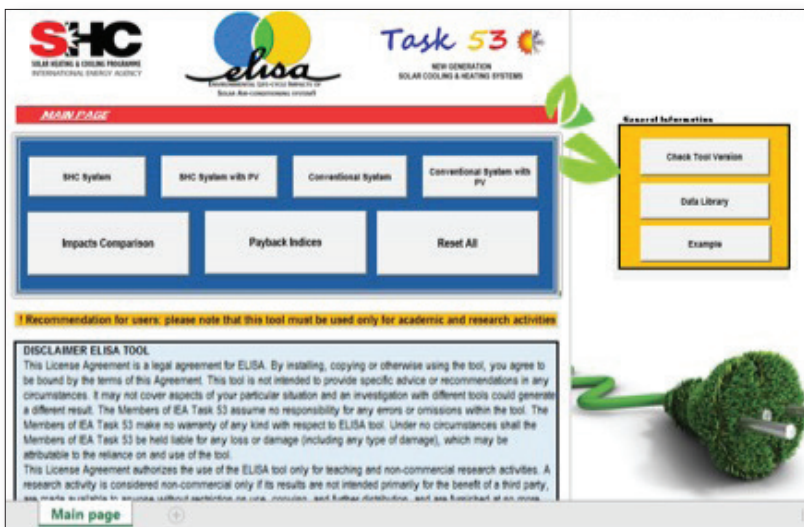
Another Excel-based tool is the Environmental Life Cycle Impacts of Solar Air-conditioning Systems (ELISA). This user-friendly Life Cycle Assessment (LCA) tool can assist researchers, designers, and decisionmakers in evaluating the life cycle energy and environmental advantages for solar cooling systems in place of conventional ones. This easy to use tool, designed for educational and research activities, takes into consideration specific climatic conditions and building loads.

ELISA was developed by the University of Palermo to carry out simplified LCAs and to compare SHC systems with conventional systems. It can:

continued on page 4

## Next Gen Solar Cooling and Heating *from page 3*

- Be used for different geographic contexts
- Compare up to 4 typologies of systems:
  1. SHC system
  2. SHC system with photovoltaic panels (PVs)
  3. Conventional systems
  4. Conventional systems with PVs
- Calculate for:
  1. Global warming potential (GWP)
  2. Global energy requirement (GER)
  3. Energy payback time (EPT)
  4. GWP payback time (GWP-PT)
  5. Energy return ratio (ERR)



Both T53E4 and ELISA as well as many other reports will be available to download for free in January 2019 from the Task 53 website, <http://task53.iea-shc.org/>.

*Daniel Mugnier of TESOL SA and Task 53 Operating Agent, Daniel Neyer of the University of Innsbruck in Austria and Task 53 expert, and Bärbel Epp of [solarthermalworld.org](http://solarthermalworld.org) contributed to this article.*

## GUIDING PRINCIPLES

**From the lessons learned and experiences gained in SHC Task 53, the participants compiled a list of 10 guiding principles for solar cooling installations once steps are taken to reduce the current energy demand.**

### Principle 1

Choose applications where high annual solar utilization can be achieved

### Principle 2

Keep the process flowsheet simple and compact

### Principle 3

Use efficient heat rejection units/systems

### Principle 4

Minimize auxiliary demand

### Principle 5

Avoid using fossil fuels as a backup for thermal-driven systems (especially for single effect ab-/adsorption chillers)

### Principle 6

Apply appropriate resources to designing, monitoring, and commissioning

### Principle 7

Provide thermal storage capacity and hydraulics in a form that matches the thermal requirements of each energy demand

### Principle 8

Minimize heat losses

### Principle 9

Avoid over-dimensioning of the collectors

### Principle 10

Design the ab-/adsorption chiller for relatively constant operation at near full load